

TEMPERATURE DATA LOGGER TM-22



OVERVIEW

Temperature Data Logger TM-22 is a temperature recorder with sampling rate fully programmable from 0.1 sec to 1.5 hour for all channels. The system is equipped with 128KB memory multiple file storage and records up to 9999 samples per logging session. This four-channel temperature measurement and profiling system is compatible with four type of thermocouple namely Type K, J, E and T. TM-22 can also communicate with PC through RS232.

TEMPERATURE DATA LOGGER TM-22

FEATURES & BENEFITS

- Up to 4 channels of temperature measurement and profiling
- Record up to 9999 sample per temperature logging session
- Sample rate is programmable from 0.1 sec to 1.5 hour for all channels
- Compatible with four type of thermocouple (J, K, E & T-type)
- Multiple file storage recordings up to 128KB data memory
- Connection of RS232 to PC for real-time control and data download
- Data can be exported to Text or Excel format with graph
- Time and Date stamp
- Power Failure Recovery
- Memory Status Display
- Over / Under temperature user preset alarm
- Password protection
- Delayed data acquisition activation

APPLICATIONS

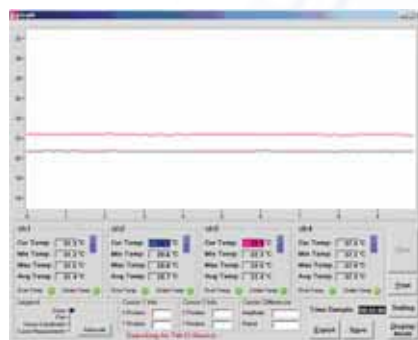
- Temperature measurement and recording

Temperature data logging software comes with every purchase of TM-22

- Enable the flexibility to export all or selected temperature channel into Text or Excel format with graph
- Availability of 3 display mode to cater for different viewing needs
- Selectable Real Time and Analysing mode
- Panning function allows shifting of graph's display to different portions of the plot.
- Zooming function can be used to enlarge or diminish a portion of the plot displayed by the graph
- Data recording can be triggered using Manual Activation or Time Based Activation function



MAIN SCREEN (REAL TIME)



MAIN SCREEN (GRAPHICAL – SINGLE GRAPH)

SPECIFICATIONS

Power Requirement	100 to 240VAC 10%, 50/60Hz, 0.8A
Operating Temperature	10°C to 40°C
Power Consumption	25W Max
Resolution	16 bits
Temperature Accuracy	0.05% ± 1°C
No. of user selectable channels	4
Sample Interval	0.1 sec to 1.5 hour for all channels
Memory	128KB

Measurement Unit	Centigrade and Fahrenheit	
Thermocouple Type	Type	Temperature
	K Type	-100°C to 1300°C
	J Type	-100°C to 1100°C
	E Type	-100°C to 995°C
	T Type	-100°C to 395°C
Dimension	260mm (L) x 185mm (W) x 70mm (H)	
Weight	2kg (exclude accessories)	

Specifications are subjected to change without prior notice

HEADQUARTER (SINGAPORE)



TRIMECH TECHNOLOGY PTE LTD

A member of TRIMECH group of companies
No. 70 Ubi Crescent #01-02/03

Ubi Techpark
Singapore 408570
Tel : 65 6741 0346

Fax: 65 6741 7850
Email: sales@cherusal.com
Website: www.cherusal.com



REGIONAL OFFICES

• **Beijing**
Tel: (86) 10 6566 2172
Fax: (86) 10 6566 2171
Email: james-zj_yao@cherusal.com

• **Hong Kong**
Tel: (852) 2111 0982
Fax: (852) 2111 0983
Email: bs_tan@cherusal.com

• **Shenzhen**
Tel: (86) 755 8231 8767
Fax: (86) 755 8231 8763
Email: bs_tan@cherusal.com

• **Shanghai**
Tel: (86) 21 5055 1008 ext 16
Fax: (86) 21 5834 6323
Email: james-zj_yao@cherusal.com

• **Taiwan**
Tel: (886) 3 262 1188
Fax: (886) 3 262 0208
Email: kenny-tan@cherusal.com

• **Thailand**
Tel: (66) 2 690 2466
Fax: (66) 2 690 2467
Email: nipon_k@cherusal.com